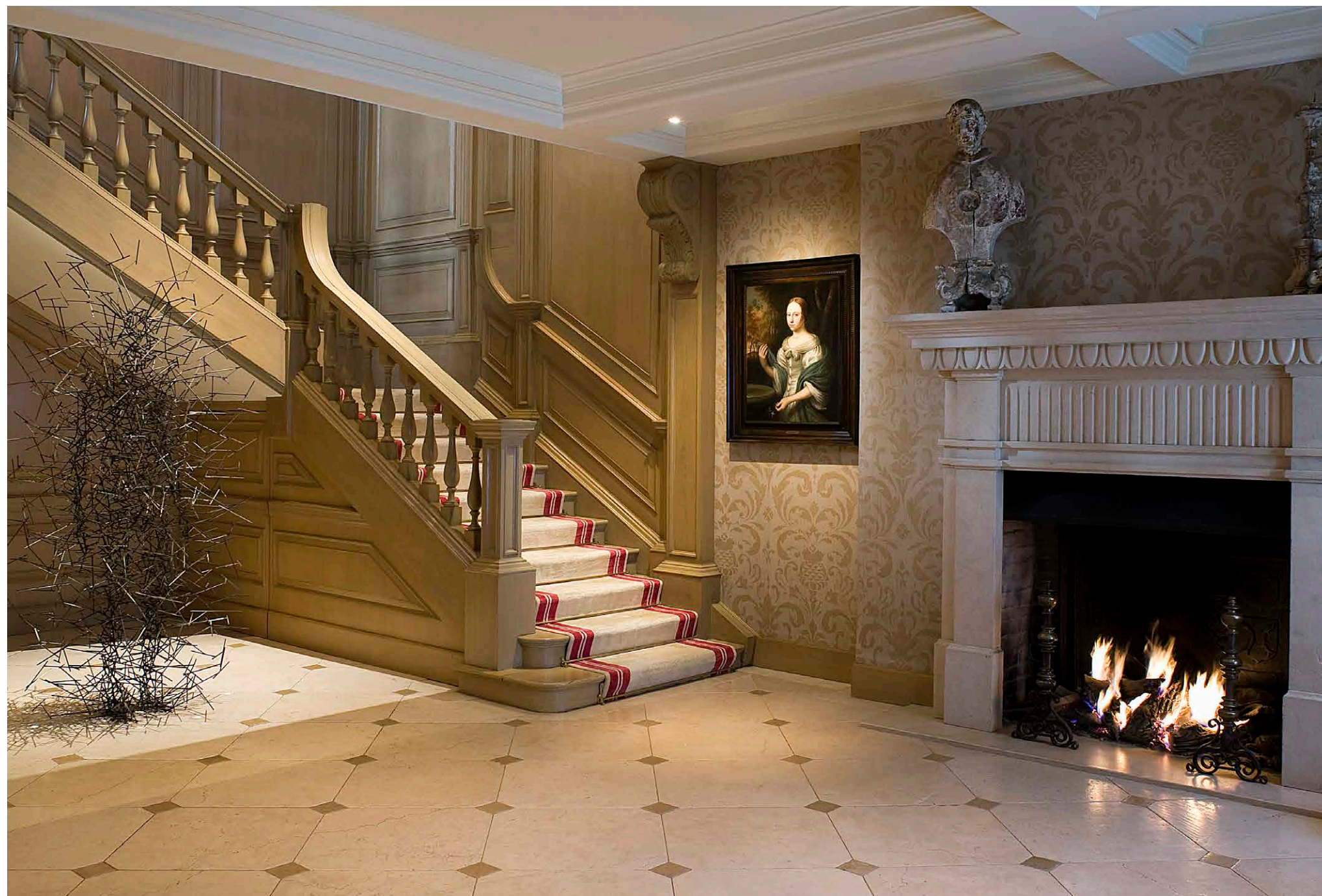




# South Street

Mayfair, London





## 28 South Street

London, W1K 1DH

### An exceptional mansion in the heart of Mayfair

Grand entrance hall • Three reception rooms • Dining room • Office/library • Kitchen

Principal bedroom suite with walk-in wardrobe, separate dressing room and en suite bath/shower room • Five further bedrooms with en suite bath/shower rooms

Wellness suite including swimming pool, bar, sauna and relaxation zone

Utility room • Three guest cloakrooms • Cellar

Three terraces





# Description

This exceptional mansion boasts approximately 8,513 sq ft of superb accommodation set across five floors, with an impressive measure of outside terrace space. The stunning red-brick Edwardian façade is five sash windows wide, and is centered with a grand Portland stone doorway. The exceptional width provides lateral living, with the reception areas of the ground and first floors alone boasting the capacity to accommodate over 100 guests.

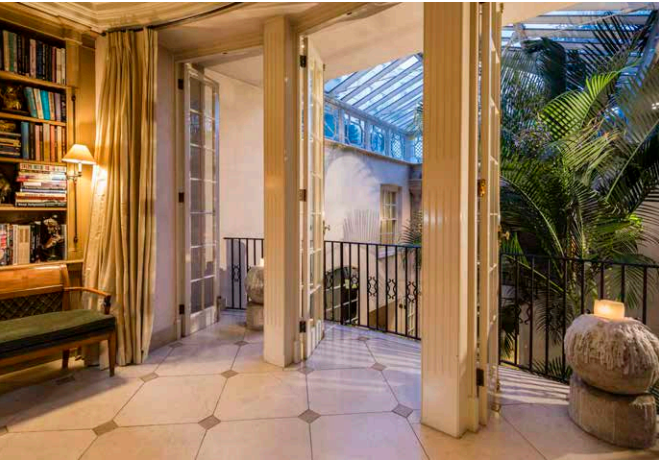
The ground floor grand entrance hall and dining room showcase beautiful polished diamond limestone flooring. The dining room features an ornate marble fireplace, and the grand entrance hall boasts a stately gas powered fireplace and a wonderful L shaped sweeping staircase, which leads to the first floor. Also situated on the ground floor is a large kitchen, a guest wardrobe, guest WC and a study of grand proportions, which opens out onto an inner balcony overlooking the lower ground floor wellness suite.



Situated on the lower ground floor is the wellness suite which is the result of delicate modernization of this exceptional mansion. Complete with swimming pool, bar, sauna and relaxation zone, which is centered around a glazed courtyard, boasting a 7 meter high pitched glass ceiling allowing an abundance of natural light, this superb wellness suite provides a quiet leisure haven. There are three bedrooms, all of which benefit from en suite bathrooms, a guest WC and a utility room also located on the lower ground floor, along with the added benefit of a separate street entrance from the front of the property.



On the first floor there are three reception rooms. The impressive main reception room extends from the central staircase, featuring a bespoke balustrade which overlooks the grand entrance hall below. The wonderful period features include a beautiful plasterwork ceiling, wood panelling and an ornate functioning fireplace. To the rear of the first floor is the second reception room where original architectural details such as the beautiful plasterwork ceiling and an original Robert Adam fireplace add character and a sense of timeless elegance in this grand house. Three sets of glass double doors provide plenty of natural light and access to the rarity of an outstanding terrace, which spans the width of the house providing superb entertaining space. There is a third reception room which also offers bespoke interior design and also benefits from floor to ceiling double doors which lead out onto the wonderful terrace.

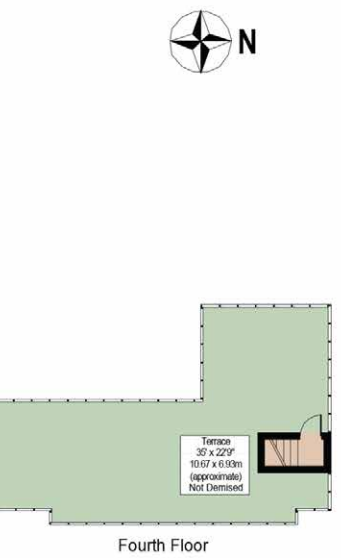
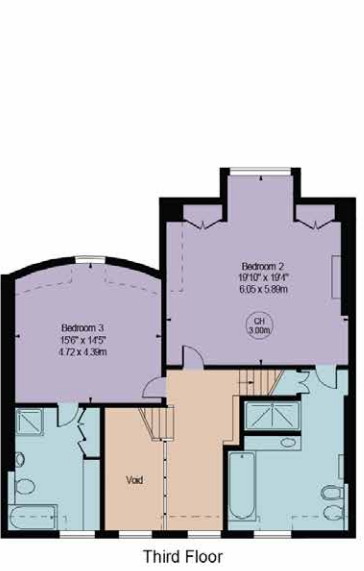
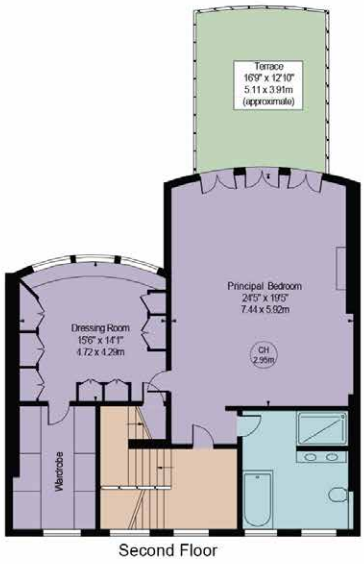


Situated across the second floor is the magnificent principal bedroom suite, which boasts superb proportions and bespoke interior design. Comprising of a sizeable dressing room, separate walk-in wardrobe, en-suite bathroom complete with walk-in shower and a bath, and floor to ceiling glass doors which lead onto the second floor terrace, on which the tall bamboo plants provide privacy. There are two further bedrooms and bath/shower rooms on the third floor and an additional roof terrace.



Location

South Street is situated in the heart of Mayfair, just off South Audley Street. It is superbly placed for the boutiques and restaurants of Mount Street and South Audley Street, as well as the other world class amenities that Mayfair has to offer. Local transport links include Bond Street Underground Station (0.5 miles) for the Jubilee and Central lines, as well as Crossrail, and Green Park Underground Station (0.4 miles) for the Jubilee, Victoria and Piccadilly lines (all distances are approximate).



Floor Plans

Approx. Total Internal Area  
8513 Sq Ft (790.88 Sq M)  
(Including Cellar & Restricted Heigh Area)

Approx. Gross Internal Area  
8340 Sq Ft (774.81 Sq M)  
(Excluding Cellar & Restricted Heigh Area)

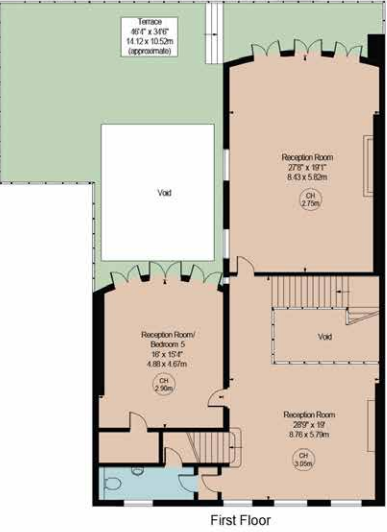
Approx. Gross Internal Area Of Cellar  
115 Sq Ft (10.86 Sq M)

Approx. Total External Area  
1577 Sq Ft (146.51 Sq M)  
(Including Patio, Terrace, Balcony, Courtyard & Excluding Non Demised Terrace)

Additional Information

Terms  
Guide price: POA  
Tenure: Freehold  
EPC: Exempt

Viewing  
Strictly by appointment with Savills.





savills

## Contact

Claire Reynolds  
Savills Mayfair  
020 7578 5100  
[mayfair\\_sales@savills.com](mailto:mayfair_sales@savills.com)

[www.savills.co.uk](http://www.savills.co.uk)

Important notice Savills, its clients and any joint agents give notice that 1: They are not authorised to make or give any representations or warranties in relation to the property either here or elsewhere, either on their own behalf or on behalf of their client or otherwise. They assume no responsibility for any statement that may be made in these particulars. These particulars do not form part of any offer or contract and must not be relied upon as statements or representations of fact. 2: Any areas, measurements or distances are approximate. The text, photographs and plans are for guidance only and are not necessarily comprehensive. It should not be assumed that the property has all necessary planning, building regulation or other consents and Savills have not tested any services, equipment or facilities. Purchasers must satisfy themselves by inspection or otherwise. Brochure by fourwalls-group.com

